

PCC COMANDANTE 176/0



**2022 MEXICO NATIONAL SHOW RESERVE
JOVEN MENOR CHAMPION**

SIRE: TJF MR SON OF A GUN 155/3 DAM: MISS ROJAS 133/4

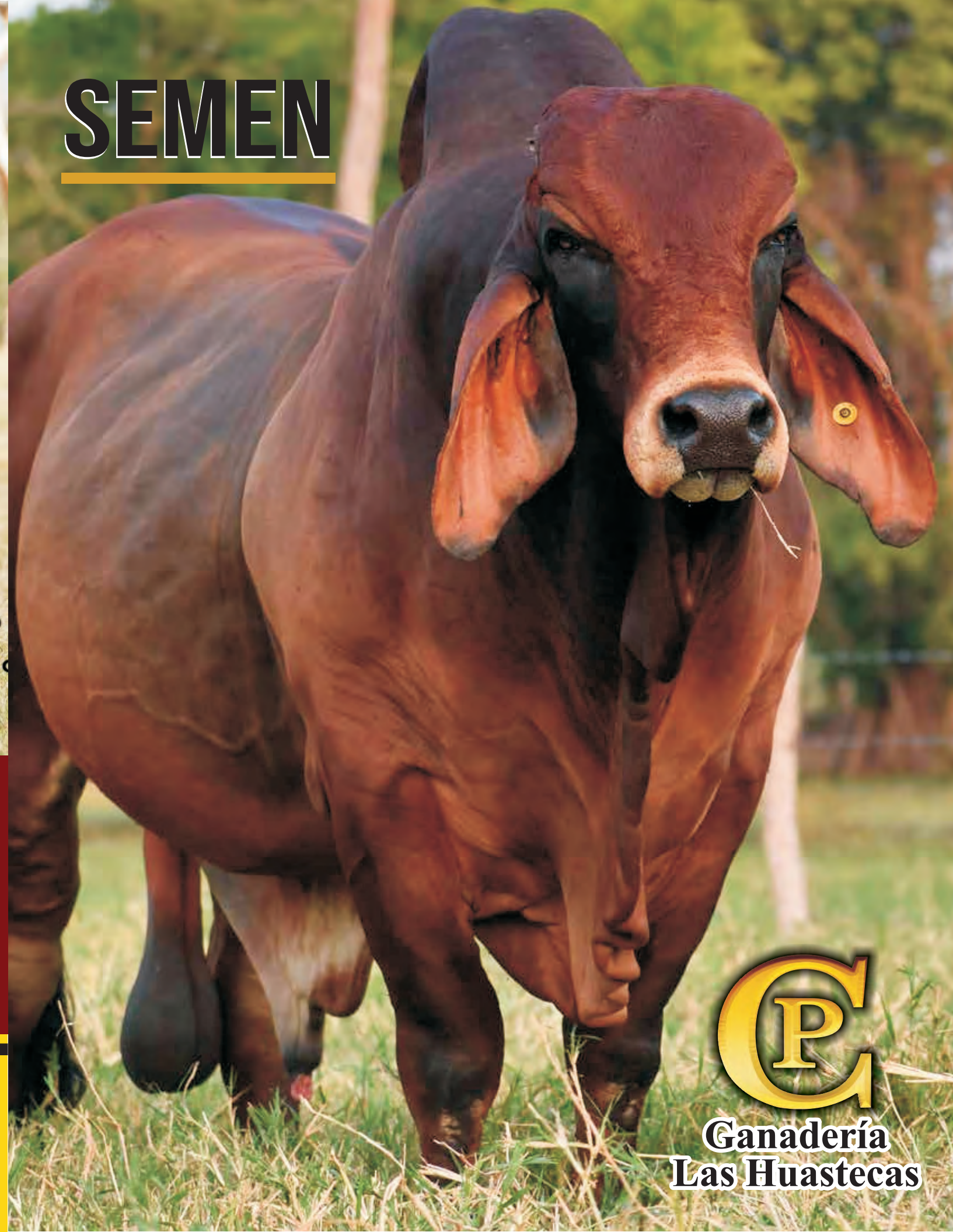
In 2006 we started breeding Gray and Red Brahman. On Red Brahmans, we started with 3 donors and a herd sire, choosing exclusively the best genetics with one goal in mind: To become breeders of high quality genetics to compete worldwide. In 2009 we started the embryo transfer work and in 2018 IVF, with the goal to accelerate and improve the genetic quality of our herd.

In Ganaderia las Huastecas, we make a great team and we work hard every day with a single purpose; to improve the genetics of the Brahman breed.

Today we give you the opportunity to have our outstanding work in your hands and start your herd or improve your cattle.

A journey of a thousand miles begins with a single step; take that step today!

SEMEN



**Ganadería
Las Huastecas**

 **GANADERIA LAS HUASTECA**

 **WWW.RANCHOHUASTECAS.COM**



**AXTLA DE TERRAZAS,
SAN LUIS POTOSI, MEX.
MEX. 442-130-66-22** 



**LAS HUASTECAS TEXAS DIVISION
5660 COUNTRYROAD 402
GRANDVIEW, TX 76050
UNITED STATES
USA+1 419-490-42-25** 

PGC MR POTOSINO 85/3



666 SPECIAL EFFORT



We admire his masculinity and fertility. He is a bull that has marked his lineage very well, inheriting his pigmentation and excellent breed character, this bull is the sire of a great part of our herd, we have used him in both gray and red females, and he has produced excellent specimens. Without a doubt he is a bull that we recommend because he has a pedigree that combines two very influential lines in the red Brahman breed. His sire is a son of +BB MR STING-RAY 10/0 and his dam is a daughter of +MR WINCHESTER MAGNUM 999.

666 SPECIAL EFFORT is a proven herd sire that has given us excellent offspring. Here's the opportunity to improve your herd. He has an extraordinary pedigree, the combination of two genetic lines that have stood out in the improvement of the Brahman breed. His sire is +MR WINCHESTER MAGNUM 999 and he's from the maternal line of +MR 3X HE'S GOT THE LOOK 40/2.

MR SG/JS P 55/7 664427

BB MR STING-RAY 10-0 A 10/0 804910

MSS SG CHILI 01 A 01 828516

+MR WINCHESTER MAG - NUM 999 A 999/3 832160

MS ELUSIVE HEART 90/7 P 90/7 664425

+ WAL S 926 MS AMBER 204 A 3/204 821087

+MR WINCHESTER MAGNUM999 A 999/3 832160

BB SHES GOT THE LOOK 75 75-6 A 755032

+HK PASSPORT A 777 724323

+5M MISS MAGNUM MOLLY A 167 767575

MR 3X HES GOT THE LOOK 40/2 A 699735

MISS COTTON VALLEY 0/25 - 0/25 A 451429

TJ MR SON OF A GUN 155/3



This bull has proven his greatness. He is the foundation of our breeding program. We started our story in the red Braman breed with him and we can proudly say this bull is the father of our best donors and herd sires that continue producing champions. His genetic line is extraordinary, he is a direct son of the register of renown bull +BB MR STING RAY 10/0.

HERE IS THE OPPORTUNITY TO START YOUR STORY IN RED BRAHMAN.

+BB MR STING-RAY 10-0 A 10/0 804910

MS JR RED LOTTO 278- A839014

MR SG/JS P 55/7



+MR 3H X-RAY 825 A 825 775361
BB MS ON TARGET A 132/8 775682

JDH CHARLETON MANSO A 330/6 785448
MISS V8 294/3 294/3 558826

We have always believed in the importance of checking the pedigree of the bulls we are going to use in our herd since they define 80% of the genetic improvement. Today we put in your hands the opportunity to increase the productive characteristics of your herd with this magnificent bull.

155/3 is a direct son of the prestigious bull +TJF MR. SMOKIN GUN 109/7 and his dam is a daughter of one of the most emblematic bulls in the red Brahman breed +BB MR STING-RAY 10/0. The opportunity is yours!

TJF MR SMOKIN GUN 109/7 A862276

+MR WINCHESTER MAGNUM999 A 999/3 832160

MS JR RED LOTTO 278- A839014

BB MR STING-RAY 10-0 A 10/0 804910

MS SS 164 -164 A864997

MS SS 126 -126 A 838433

2021 MEXICO NATIONAL SHOW RESERVE BECERRO CHAMPION

2022 MEXICO NATIONAL SHOW JOVEN CHAMPION

PCC ROMANO FIV P864138



PPC-MR POTOSINO-85/3 P693210

HK MS WINCHESTER 241-241 P708639

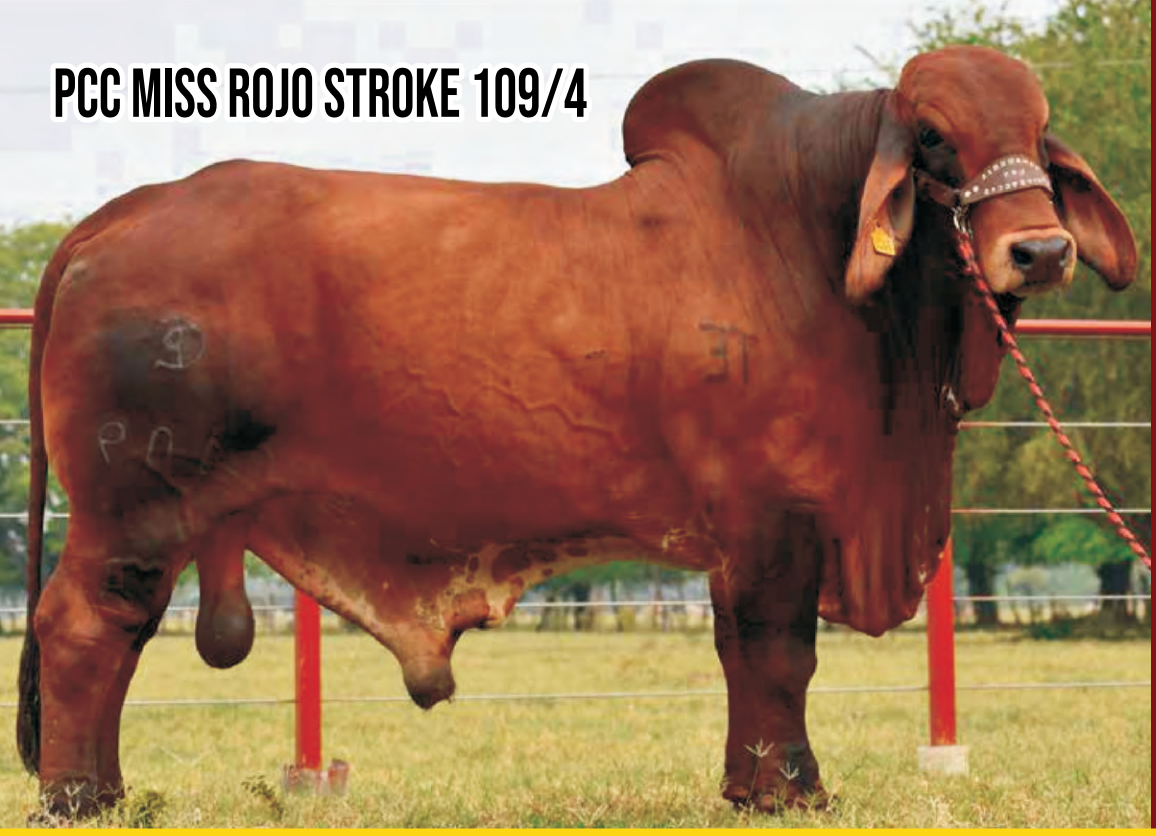
MR SG/JS 55/7 P664425

MS ELUSIVE HEART 90/7 90/7 P664425

+MR WINCHESTER MAGNUM 999-999/3 A832160

MISS KC RUBY808/4 808/4 A842084

PCC MISS ROJO STROKE 109/4



Here's a great herd sire that is an excellent opportunity to improve the bloodline of your herd in a faster and affordable way. Take your good judgment and choose the future of your cattle.

+SRS RED TROKE 522 A745167

+SOPHISTICATEDMILLONAIR 80/3 A558426

+SRS MISS JOSE 279 A543825

MS ELUSIVE HEART 90/7 90/7 A684425

+MR WINCHESTER MAGNUM 999 A 999/3 A832160

+WAL 3/S 926 MS AMBER 204 A 204 A821087

PCC POMPEYO TE



VL ROJO GRANDE 4/95 4/95 - A721429

+SOPHISTICATEDMILLONAIR 80/3 A558426

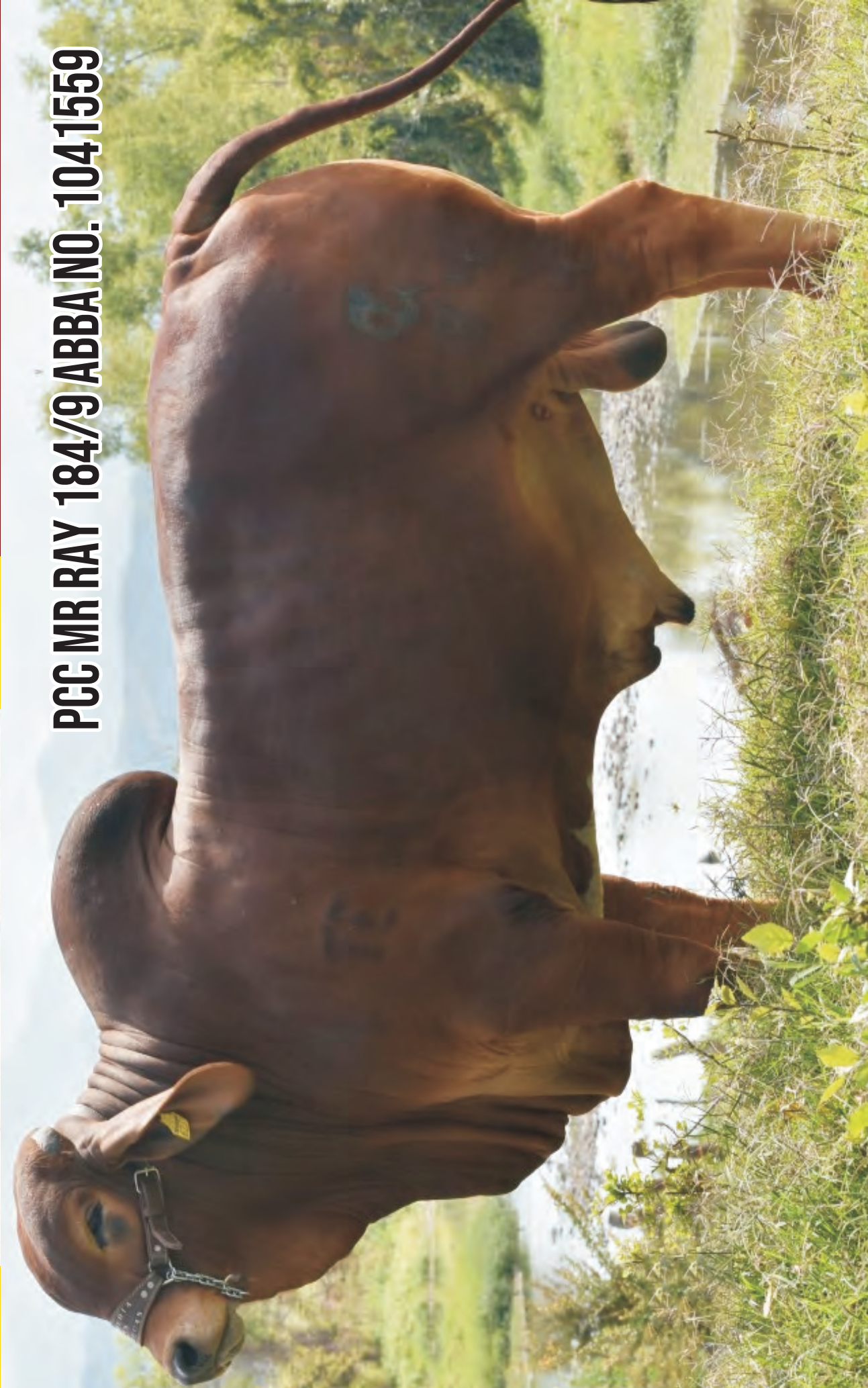
VL ELENA 23/4 - 23/4 - A551891

VL ELENA 3/100-3/100 P849704

VL ROJO DESINER 78/5 - 78/5 - A876765

VL ELENA 140/0 - A815998

PCC MR RAY 184/9 ABBA NO. 1041559



+MR 3H X-RAY 825 (825) 775361

BB RIO TORGSON 52/5 (52/5) 743983

MR SG/JS 55/7 55/7 1041539

MS ELUSIVE HEART 90/7 90/7 1041540

BB MR RAY 365 (365/4) 842223

PPC-MISS 4/1 4/1 1041541

2021 MEXICO NATIONAL SHOW GRAND CHAMPION

2021 MEXICO NATIONAL SHOW JOVEN CHAMPION